



INDUSTRIAL GRADE HOT RUNNER CONTROLLERS & CABLES

FROM 2 TO 256 ZONES

1) TOUGHEST CONTROLLERS ON THE MARKET:

- INDUSTRIAL STRENGTH CASE
- TOUGHENED **IMPACT** RESISTANT TOUCH SCREEN DISPLAY
- TOUGHEST TOOL CONNECTION CABLES IN THE INDUSTRY
- 2 YEAR WARRANTY & 10 YEAR COMPATABILITY GUARANTEE



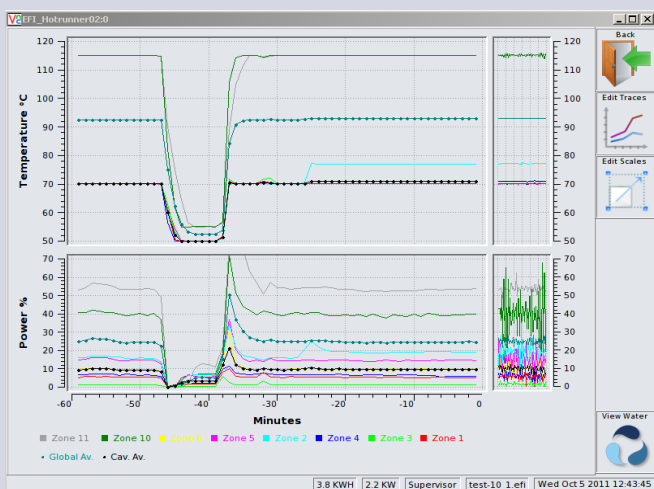
IMPACT RESISTANT TOUCH SCREEN DISPLAY



SMART PHONE COMPATABLE FOR OFF SITE MONITORING

2) EASY TO USE AND FUNCTIONAL:

- EASY TO UNDERSTAND AND SIMPLE TO OPERATE
- FULL COLOUR MANUAL ON BOARD
- FAST AND EASY ACCESS TO ALL FUSES & BOARDS
- EASY REMOVE DISPLAY PANEL FOR MACHINE MOUNTING
- NETWORK CAPABLE FOR OFF SITE MONITORING
- USB, SMARTPHONE, NETWORK & WIFI COMPATABLE



COLOUR CODED GRAPHS FOR TEMPERATURE, POWER AND WATER FLOW



TOUGHEST CABLES WITH SWIVELLING HOODS

3) FULL PROTECTION OF THE TOOL:

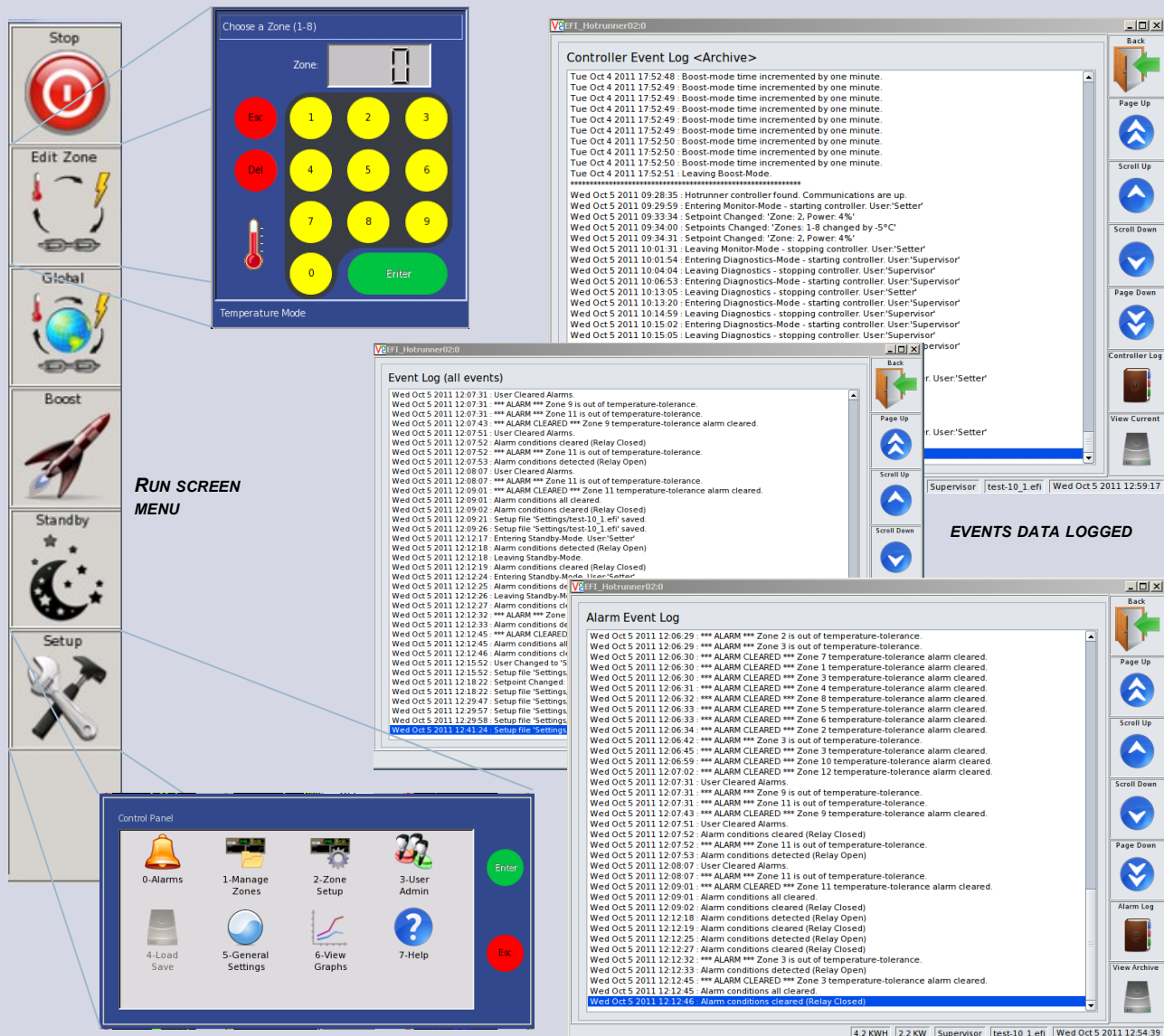
- FULL DIAGNOSTIC SUITE & TROUBLE SHOOTING TOOLS
- DOWNLOADABLE TOOL DIAGNOSTIC REPORTS
- FULL TOOL PROTECTION WITH FULL ALARM SUITE
- REAL TIME WATERFLOW MONITORING FOR ULTIMATE TOOL PROTECTION

Zone	°C Set	Par Set	TC-Corr
1 Cav	330	330	0
2 Cav	330	330	0
3 Cav	330	330	0
4 Cav	330	330	0
5 Cav	330	330	0
6 Cav	330	330	0
7 Cav	330	330	0
8 Cav	330	330	0
9 Cav	330	330	0
10 Cav	330	330	0
11 Cav	330	330	0
12 Man-1	330	330	0
13 Man-2	330	330	0
14 Man-3	330	330	0
15 Man-4	330	330	0
16 Man-5	330	330	0

ALARM PANEL

DIAGNOSTIC REPORT

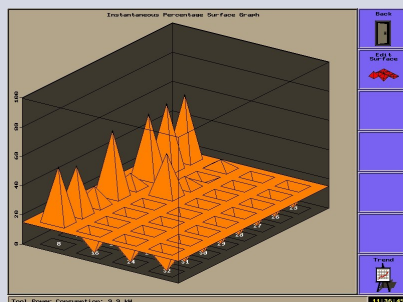
Diagnostics File test_diag.txt			
Diagnostics Report			
Started: Wed Oct 5 2011 10:01:54			
Zone 1 (Cavity):			
Starting temperature: 25C. End temperature: 33C.			
Time taken: 6 seconds			
Heater 1 connected to thermocouple 1 Up. Zone is OK.			
Heater resistance: 22 Ohms			
Zone 2 (Cavity):			
Starting temperature: 25C. End temperature: 31C.			
Time taken: 10 seconds			
Heater 2 connected to thermocouple 2 Up. Zone is OK.			
Heater resistance: 23 Ohms			
Zone 3 (Cavity):			
Starting temperature: 25C. End temperature: 32C.			
Time taken: 5 seconds			
Heater 3 connected to thermocouple 3 Up. Zone is OK.			
Heater resistance: 22 Ohms			
Zone 4 (Cavity):			
Starting temperature: 25C. End temperature: 31C.			
Time taken: 5 seconds			
Heater 4 connected to thermocouple 4 Up. Zone is OK.			
Heater resistance: 22 Ohms			
Zone 5 (Cavity):			
Starting temperature: 25C. End temperature: 31C.			
Time taken: 9 seconds			
Heater 5 connected to thermocouple 5 Up. Zone is OK.			
Heater resistance: 65 Ohms			
Zone 6 (Cavity):			
Starting temperature: 25C. End temperature: 31C.			
Time taken: 8 seconds			
Heater 6 connected to thermocouple 6 Up. Zone is OK.			
Heater resistance: 62 Ohms			



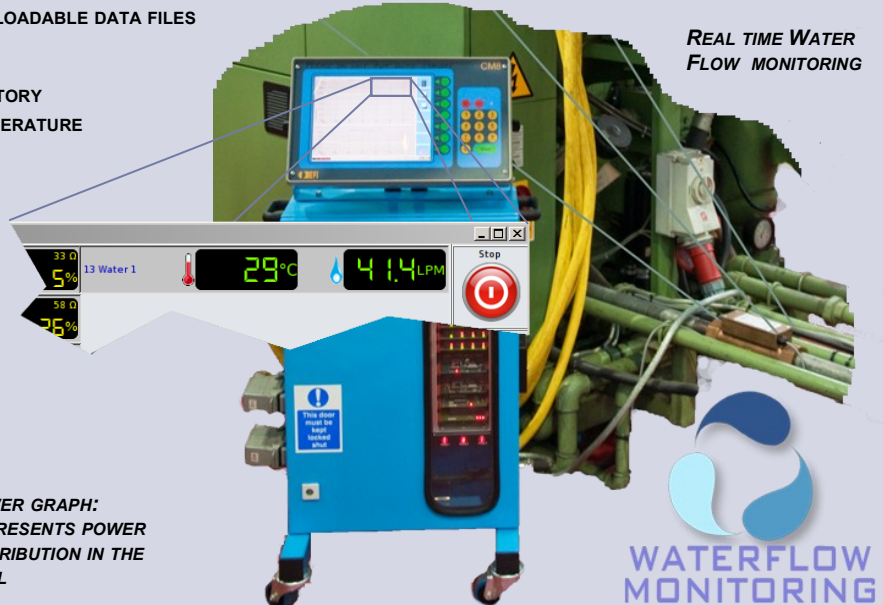
BUT ALSO:

- EASY CLEAN DESIGN FOR CLEAN ROOM OPERATIONS
- 12 MONTH VIEWABLE, SCALEABLE AND DOWNLOADABLE DATA FILES & PRODUCTION FILES
- DOWNLOADABLE HISTORY FILES
- FULLY GRAPHED POWER & TEMPERATURE HISTORY
- FULLY GRAPHED WATER FLOW & WATER TEMPERATURE
- ... AND MANY MORE OPTIONS.

PLEASE CONTACT EFI FOR MORE DETAILS



POWER GRAPH:
REPRESENTS POWER
DISTRIBUTION IN THE
TOOL



**REAL TIME WATER
FLOW MONITORING**

**WATERFLOW
MONITORING**



EFI Systems Ltd
46 Melbourne Road
LOWESTOFT
SUFFOLK - ENGLAND
NR32 1ST

Tel: +44 (0)1502 518 397
sales@efisystems.co.uk
<http://www.efisystems.eu>